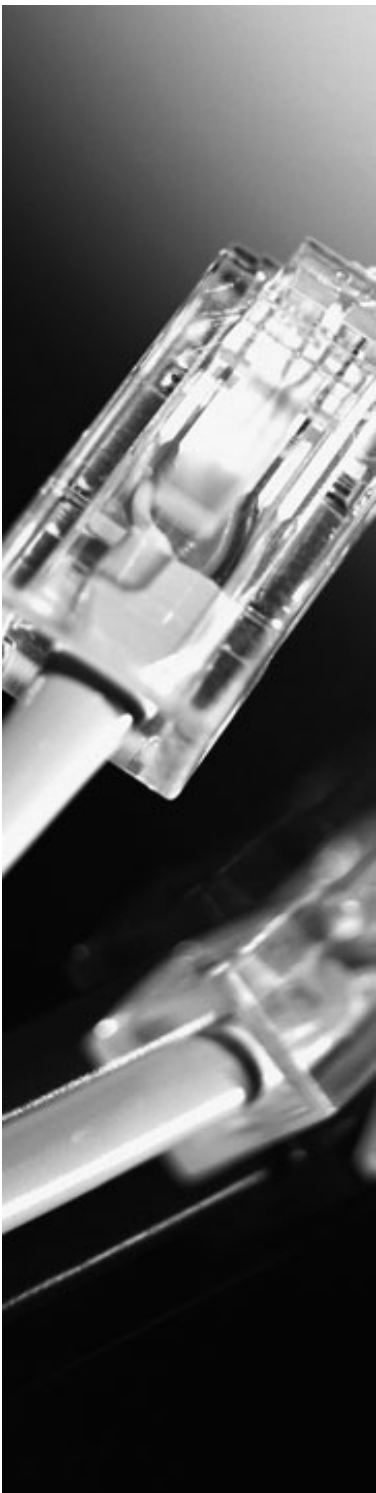


E-services in Social and Health Care

Karin Bengtsson
Manager IT-forum



As simple as possible
for as many as possible



Stockholm County association of Local authorities

- The Capital of Sweden
- 2,1 millions Citizens

Municipalities in Stockholm region

- 26 autonomous municipalities
- 9 000 – 850 000 citizens
- Municipality is responsible for social services
- Taxes finance 95%, 5 % fee from user
- Person in need is by law entitled to help
- Municipality (social services officer) makes need assessment and decides level of help
- Individual can appeal against decision in court
- Inhouse 70%, 29 % private 1% non profit

Stockholm County

- 2,1 millions citizens
- County is responsible for Health Care
- Taxes finances 95%
- Inhouse 75%, Private companies 24% , 1% non profit organisation



eHealth - As simple as possible for as many as possible

- New e-services simplify daily life
- The administration needs improvement
- Safety and integrity

ell eHäls

ir tillgänglig och säk
inom vård och omsor



Film

[http://international.stockholm.se/
Stockholm-by-theme/e-Governance/
Compare-Services/](http://international.stockholm.se/Stockholm-by-theme/e-Governance/Compare-Services/)

Today

- Information
- Identification
- Apply for services
- Compare services
- Information about waiting times
- E-prescription
- Health care advice
- Care diary
- Chlamydia test



Tomorrow

- One way in to social/health care
- Sharing information
- Accessibility to personal information
- Quality improvement



Thank You for your attention

karin.bengtsson@ksl.se